

KEY CYLINDER INSTALLATION

**GLD
Master Key**
Operates
any Master
cylinder



**GLD
User Key**
Operates
cylinders with
specified key
code



**GLD
Change Key**
For cylinder
install and
removal



1



2



3



1a. T-Slot Alignment

Make sure the bottom of the T-slot in the cylinder housing is pointed to the opposite side as the alignment dimples. If not, adjust with screwdriver.



Change Key Removal

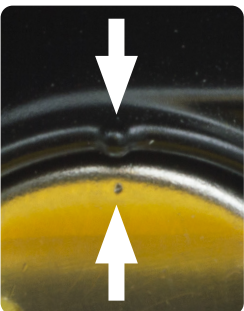
Once the key cylinder is fully inserted, firmly place thumb over face of cylinder and withdraw the change key. Cylinder face should appear recessed in the housing for secure fit.

Seating the Key Cylinder

Insert the GLD user key (purple key) with matching key code and rotate the key to properly seat the key cylinder inside the housing.

1b. Cylinder Insertion

Insert cylinder with GLD Change key (yellow key) making sure the dimples on the cylinder face and cylinder housing are aligned.



Cylinder Notes:

1) The "M" Cylinder is the Master Cylinder used in the entrance door paddle handle and compartment/baggage door locks.



**Mastered
Cylinder**

2) Non-Mastered cylinders are used in the deadbolt lock.



**Non-Mastered
Cylinder**

KEY CYLINDER REMOVAL

**GLD
Master Key**
Operates
any Master
cylinder



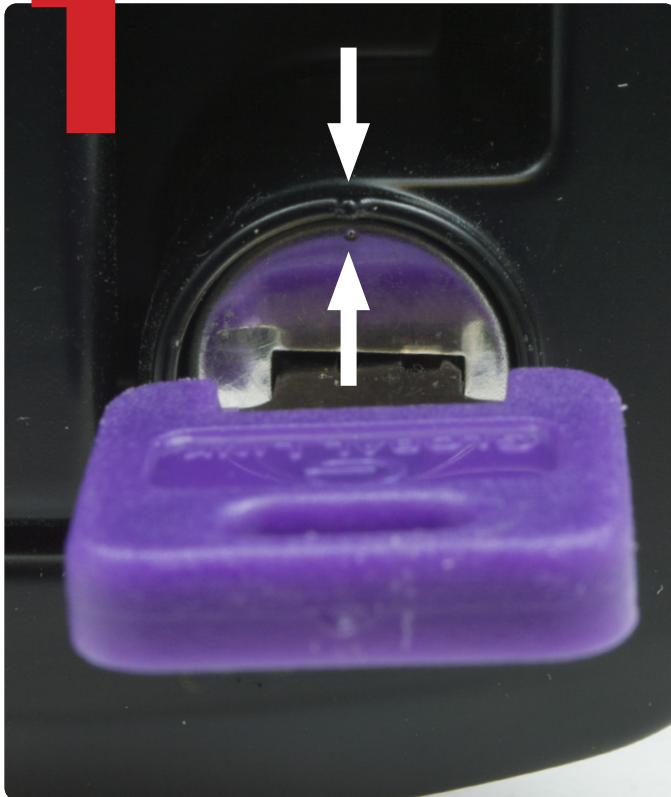
**GLD
User Key**
Operates
cylinders with
specified key
code



**GLD
Change Key**
For cylinder
install and
removal



1



Cylinder Alignment

Use the GLD User key (purple key) to align the dimple on the cylinder with the cylinder housing dimples.

2



Key Cylinder Removal

Insert the GLD Change key (yellow key) and remove cylinder.

Cylinder and Key Notes:

1) The "M" Cylinder is the Master Cylinder used in the entrance door paddle handle and compartment/baggage door locks.

2) Non-Mastered cylinders are used in the deadbolt lock.



Mastered Cylinder

Can be operated with the GLD Master Key and the GLD User Key with the same key code.



Non-Mastered Cylinder

Can only be operated by the GLD User Key with the same key code.